

AMACO LEAD FREE VELVET (V) UNDERGLAZES FOR BISQUE, GREENWARE AND WET CLAY

PRICE LIST ON PAGES 5-6



NON-TOXIC
Conforms to
ASTM D-4236

V-308 [O] (Y)	V-391 [O] (Y)	V-304 [O] (Y)	V-309 [O] (Y)	V-350 [O] (Y)	V-390 [O] (Y)	V-384 [O] (Y)	V-389 [O] (Y)	V-303 [O] (Y)	V-316 [O] (Y)	
Yellow	Intense Yellow	Straw	Deep Yellow	Orange	Bright Orange	Real Orange	Flame Orange	Terra Cotta	Light Pink	
V-374 [O] (Y)	V-315 [O] (Y)	V-323 [O] (Y)	V-371 [O] (Y)	V-318 [O] (Y)	V-383 [O] (Y)	V-388 [O] (Y)	V-382 [O] (Y)	V-387 [O] (Y)	V-385 [O] (Y)	V-375 [O] (Y)
Royal Peach	Peach	Salmon	Rosy Mauve	Rose	Light Red	Radiant Red	Red	Bright Red	Cinnamon	Maroon
V-321 [O] (Y)	V-320 [O] (Y)	V-380 [O] (Y)	V-381 [O] (Y)	V-322 [O] (Y)	V-328 [O] (Y)	V-325 [O] (Y)	V-327 [O] (Y)	V-341 [O] (Y)	V-326 [O] (Y)	V-386 [O] (Y)
Lilac	Lavender	Violet	Amethyst	Purple	Iceberg Blue	Baby Blue	Turquoise Blue	Blue Green	Medium Blue	Electric Blue
V-332 [O] (Y)	V-336 [O] (Y)	V-334 [O] (Y)	V-372 [O] (Y)	V-343 [O] (Y)	V-345 [O] (Y)	V-354 [O] (Y)	V-353 [O] (Y)	V-376 [O] (Y)	V-333 [O] (Y)	V-355 [O] (Y)
Teal Blue	Royal Blue	Flaxen	Mint Green	Chartreuse	Light Green	Leaf Green	Dark Green	Hunter Green	Avocado	Shadow Green
V-368 [O] (Y)	V-301 [O] (Y)	V-369 [O] (Y)	V-302 [O] (Y)	V-310 [O] (Y)	V-373 [O] (Y)	V-366 [O] (Y)	V-313 [O] (Y)	V-314 [O] (Y)	V-360 [O] (Y)	V-367 [O] (Y)
Antique Ivory	Ivory Beige	Fawn	Beige	Tan	Medium Brown	Teddy Bear Brown	Red Brown	Chocolate Brown	White	Mist Gray
V-356 [O] (Y)	V-357 [O] (Y)	V-370 [O] (Y)	V-361 [O] (Y)							
Pearl Gray	Dark Gray	Velour Black	Jet Black							

LEAD FREE VELVET UNDERGLAZES

Mix and layer hundreds of colors! Their saturated color, dependability and versatility make Velvets as popular for pros as they are for children. Velvets fire true-to-color as a Cone 05/06 underglaze or fired to Cone 6. Try two finish possibilities: When left unglazed, these colors have the rich, textural appearance of velvet; when covered with AMACO® Clear Transparent Matt or Clear Gloss glaze, they intensify in color. Can be applied easily to wet clay, greenware or mature Cone 04 bisque (1971° F, 1077° C).

VELVETS FIRE TRUE TO COLOR!

Velvet Underglazes color chips shown fired at Cone 05 on AMACO® 25-M White Clay bisque buttons. One half of each button is shown with LG-10 Clear Transparent Glaze. AMACO® Velvets should not be used alone on dinnerware surfaces.

Tableware producers must have all finished ware tested and approved as safe for dinnerware through a certified laboratory due to possible variations in firing temperature and possible contamination.



[O]=Opaque [TP]=Transparent [TL]=Translucent [ST]=Semi-Translucent [SO]=Semi-Opaque

☞ Only glazes marked with the spray symbol may be used for safe spray application.

☑ Dinnerware Safe. ☒ Not Dinnerware Safe.

LEAD FREE VELVETS TEMPERATURE/COLOR VARIATION CHART CONE 5

PRICE LIST ON PAGES 5-6

All AMACO®Velvet and Designer Velvet underglazes are versatile and can be used on low fire, mid range, or high fire clays. The temperature/color variation charts on pages 16 and 17 show how AMACO® Velvet and Designer Velvet Underglazes look when fired to Cone 5 or 10 on AMACO® 38-M White Stoneware Clay. Use these charts as a guide when selecting underglazes for use on stoneware or porcelain.



Velvet Underglazes fired on AMACO® 38-M White Stoneware Clay bisque buttons. One half of each button is shown with HF-9 Clear Glaze.

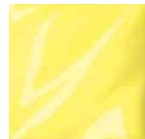
For a side by side comparison between Cone 05, 5, and 10 visit velvetconecharts.com

AMACO LEAD FREE LIQUID (LUG) UNDERGLAZES FOR BISQUE, GREENWARE AND WET CLAY

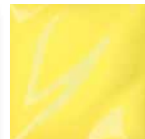
PRICE LIST ON PAGES 5-6



NON-TOXIC
Conforms to
ASTM D-4236



LUG-60 [O] [TP] [TL] [ST] [SO] [S] Light Yellow



LUG-61 [O] [TP] [TL] [ST] [SO] [S] Bright Yellow



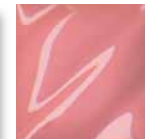
LUG-53 [O] [TP] [TL] [ST] [SO] [S] Sun Tan



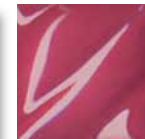
LUG-65 [O] [TP] [TL] [ST] [SO] [S] Orange



LUG-52 [O] [TP] [TL] [ST] [SO] [S] Peach



LUG-50 [O] [TP] [TL] [ST] [SO] [S] Pink



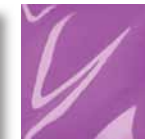
LUG-51 [O] [TP] [TL] [ST] [SO] [S] Rose



LUG-58 [O] [TP] [TL] [ST] [SO] [S] Dark Red



LUG-56 [O] [TP] [TL] [ST] [SO] [S] Maroon



LUG-54 [O] [TP] [TL] [ST] [SO] [S] Lilac



LUG-55 [O] [TP] [TL] [ST] [SO] [S] Purple



LUG-20 [O] [TP] [TL] [ST] [SO] [S] Light Blue



LUG-26 [O] [TP] [TL] [ST] [SO] [S] Aqua



LUG-21 [O] [TP] [TL] [ST] [SO] [S] Medium Blue



LUG-25 [O] [TP] [TL] [ST] [SO] [S] Turquoise



LUG-22 [O] [TP] [TL] [ST] [SO] [S] Dark Blue



LUG-40 [O] [TP] [TL] [ST] [SO] [S] Chartreuse



LUG-41 [O] [TP] [TL] [ST] [SO] [S] Warm Green



LUG-43 [O] [TP] [TL] [ST] [SO] [S] Dark Green



LUG-42 [O] [TP] [TL] [ST] [SO] [S] Blue Green



LUG-30 [O] [TP] [TL] [ST] [SO] [S] Light Brown



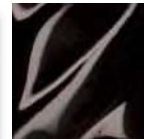
LUG-31 [O] [TP] [TL] [ST] [SO] [S] Mahogany Brown



LUG-10 [O] [TP] [TL] [ST] [SO] [S] White



LUG-15 [O] [TP] [TL] [ST] [SO] [S] Warm Gray



LUG-1 [O] [TP] [TL] [ST] [SO] [S] Black

LEAD FREE (LUG) LIQUID UNDERGLAZES

These colors will cover large areas quickly. Also great for detailed painting, sgraffito, watercolor effects, wax resists, and mishima decoration. AMACO® LUG's may be brushed on wet clay or greenware which is to be bisque fired before applying a covering glaze, or on mature Cone 04 bisque before applying a covering glaze.

LUG Series underglaze color chips shown fired at Cone 05 on AMACO® 25-M White Clay bisque buttons under LG-10 Clear Transparent Glaze.

AMACO® LUG's should not be used alone on dinnerware surfaces.

Tableware producers must have all finished ware tested and approved as safe for dinnerware through a certified laboratory due to possible variations in firing temperature and possible contamination.



373945 LUG's Class Pack, pints, AP – 6 colors: Bright Yellow, Dark Red, Medium Blue, Dark Green, White, Black

37392P LUG's Class Pack, pints, AP – 12 colors: Light Yellow, Peach, Rose, Dark Red, Light Blue, Aqua, Dark Blue, Dark Green, Blue Green, Light Brown, White, Black

AMACO LEAD FREE SUN STROKES (SS) BRILLIANT UNDERGLAZES FOR BISQUE



NON-TOXIC
Conforms to
ASTM D-4236



SS-204 [O] [TP] [TL] [ST] [SO] [S] Daffodil Yellow



SS-205 [O] [TP] [TL] [ST] [SO] [S] Zinnia Orange



SS-203 [O] [TP] [TL] [ST] [SO] [S] Marigold Orange



SS-202 [O] [TP] [TL] [ST] [SO] [S] Snapdragon



SS-201 [O] [TP] [TL] [ST] [SO] [S] Tulip Red



SS-206 [O] [TP] [TL] [ST] [SO] [S] Clover Green



37393R Sun Strokes Underglaze Class Pack, pints, AP – 6 colors: Daffodil Yellow, Zinnia Orange, Marigold Orange, Snapdragon, Tulip Red, Clover Green

LEAD FREE (SS) SUN STROKES BRILLIANT UNDERGLAZES

These colors have a gloss finish, although a clear glaze will smooth and brighten the colors. Apply two even coats on a mature Cone 04 bisque, then fire to Cone 05 (1911°F, 1044°C).

SS Series Underglaze color chips shown fired at Cone 05 on AMACO® 25-M White Clay bisque buttons under LG-10 Clear Transparent Glaze.

AMACO® Sun Strokes should not be used alone on dinnerware surfaces.

Tableware producers must have all finished ware tested and approved as safe for dinnerware through a certified laboratory due to possible variations in firing temperature and possible contamination.

[O]=Opaque [TP]=Transparent [TL]=Translucent [ST]=Semi-Translucent [SO]=Semi-Opaque

☞ Only glazes marked with the spray symbol may be used for safe spray application.

☑ Dinnerware Safe. ☒ Not Dinnerware Safe.

AMACO LEAD FREE ENGOBES (SE) FOR GREENWARE AND WET CLAY

PRICE LIST ON PAGES 5-6



NON-TOXIC
Conforms to
ASTM D-4236



SE-760 [O] (✓) Yellow



SE-720 [O] (✓) Dark Blue



SE-740 [O] (✓) Dark Green



SE-732 [O] (✓) Dark Buff

LEAD FREE (SE) ENGOBES

Bisque fire AMACO® Engobes to Cone 04 (1971°F, 1077°C), glaze, then fire to Cone 05 (1911°F, 1044°C). Or, apply to Cone 5/6 clay, bisque fire, then glaze and fire to the temperature of the clay body.



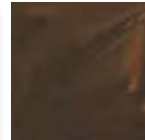
SE-730 [O] (✓) Red Brown



SE-731 [O] (✓) Natural Brown



SE-710 [O] (✓) White



SE-701 [O] (✓) Natural Black



SE-702 [O] (✓) Jet Black

AMACO LEAD FREE DESIGNER VELVET (DV) UNDERGLAZES FOR BISQUE, GREENWARE AND WET CLAY



NON-TOXIC
Conforms to
ASTM D-4236



DV-3308 [O] (✓) Desert Sun



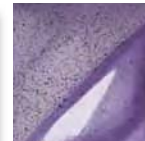
DV-3316 [O] (✓) Speckled Pink



DV-3374 [O] (✓) Painted Desert



DV-3371 [O] (✓) Rosy Mauve



DV-3320 [O] (✓) Desert Verbena



DV-3325 [O] (✓) Desert Sky



DV-3327 [O] (✓) Turquoise Stone



DV-3334 [O] (✓) Sand Dune



DV-3372 [O] (✓) Desert Grass



DV-3354 [O] (✓) Cactus Green



DV-3368 [O] (✓) Phoenix Ivory



DV-3369 [O] (✓) Sandstorm



DV-3302 [O] (✓) Canyon Beige



DV-3360 [O] (✓) Feather White



DV-3367 [O] (✓) Tumbleweed



DV-3328 [O] (✓) Fossil Gray

LEAD FREE (DV) DESIGNER VELVET UNDERGLAZES

Designer Velvets have the same distinction as the original Velvet Line with the addition of small specks. When left unglazed, they assume the appearance of velvet or velour with a soft speckle effect. When glazed with AMACO® Transparent Matte or Clear Glazes, they intensify in color. Designer Velvet colors can be used on wet clay, greenware or bisque. Brush on greenware or wet clay to be bisque fired before applying a covering glaze or on a mature Cone 04 (1971°F, 1077°C) bisque, then apply a covering glaze.



Designer Velvets color chips shown fired at Cone 05 on AMACO® 25-M White Clay bisque buttons. One half of each Designer Velvets button is shown with LG-10 Clear Transparent Glaze.

Engobes applied on AMACO® 25-M White Clay bisque buttons under LG-10 Clear Transparent Glaze.

AMACO® Designer Velvets and Engobes should not be used alone on dinnerware surfaces.

Tableware producers must have all finished ware tested and approved as safe for dinnerware through a certified laboratory due to possible variations in firing temperature and possible contamination.

[O]=Opaque [TP]=Transparent [TL]=Translucent [ST]=Semi-Translucent [SO]=Semi-Opaque

☞ Only glazes marked with the spray symbol may be used for safe spray application.

☑ Dinnerware Safe. ☒ Not Dinnerware Safe.

PRICING: (AP) LEAD FREE (V) UNDERGLAZES					
Series No.	Color	Pint Liquid Cat. No.	Price	Gallon Liquid Cat. No.	Price
V-301	Ivory Beige	37501K	\$17.34	—	—
V-303	Terra Cotta	37451M	\$17.34	—	—
V-304	Straw	37502L	\$17.34	—	—
V-308	Yellow	37460A	\$17.34	37515D	\$90.10
V-309	Deep Yellow	37452N	\$17.34	37516E	\$90.10
V-313	Red Brown	37449K	\$17.34	37517F	\$90.10
V-314	Chocolate Brown	37409K	\$17.34	37518C	\$90.10
V-315	Peach	37484N	\$17.34	—	—
V-316	Light Pink	37444E	\$17.34	—	—
V-318	Rose	37461B	\$17.34	—	—
V-320	Lavender	37462C	\$25.50	—	—
V-321	Lilac	37454R	\$17.34	—	—
V-322	Purple	37445F	\$17.34	37519G	\$95.20
V-323	Salmon	37446G	\$17.34	—	—
V-325	Baby Blue	37463D	\$17.34	37520H	\$90.10
V-326	Medium Blue	37447H	\$17.34	37521K	\$90.10
V-327	Turquoise Blue	37485P	\$17.34	37522L	\$90.10
V-332	Teal Blue	37464E	\$17.34	—	—
V-333	Avocado	37509S	\$17.34	—	—
V-336	Royal Blue	37486R	\$37.40	—	—
V-341	Blue Green	37448J	\$17.34	—	—
V-343	Chartreuse	37675L	\$17.34	37523M	\$90.10
V-345	Light Green	37498F	\$17.34	37524N	\$90.10
V-350	Orange	37503J	\$17.34	—	—
V-353	Dark Green	37455S	\$17.34	37525P	\$90.10
V-354	Leaf Green	37465F	\$17.34	37526R	\$90.10
V-360	White	37436T	\$17.34	37527S	\$90.10
V-361	Jet Black	37438X	\$17.34	37528T	\$90.10
V-366	Teddy Bear Brown	37679S	\$17.34	—	—
V-370	Velour Black	37456T	\$25.50	37529V	\$127.50
V-372	Mint Green	37487B	\$17.34	—	—
V-375	Maroon	37489T	\$37.40	—	—
V-376	Hunter Green	37490V	\$17.34	—	—
V-380	Violet	37466H	\$37.40	—	—
V-381	Amethyst	37467G	\$37.40	37530W	\$187.00
V-382	Red	37468J	\$37.40	37531X	\$187.00
V-383	Light Red	37469K	\$37.40	—	—
V-384	Real Orange	37470L	\$37.40	37532A	\$187.00
V-385	Cinnamon	37497E	\$17.34	—	—
V-386	Electric Blue	37674K	\$17.34	37533B	\$90.10

Series No.	Color	Pint Liquid Cat. No.	Price	Gallon Liquid Cat. No.	Price
V-387	Bright Red	37510V	\$37.40	37534C	\$187.00
V-388	Radiant Red	37511W	\$37.40	—	—
V-389	Flame Orange	37512X	\$37.40	—	—
V-390	Bright Orange	37513A	\$37.40	—	—
V-391	Intense Yellow	37514B	\$37.40	—	—

PRICING: (AP) LEAD FREE (LUG) UNDERGLAZES					
Series No.	Color	Pint Liquid Cat. No.	Price	Gallon Liquid Cat. No.	Price
LUG-1	Black	41171H	\$22.02	41169G	\$127.50
LUG-10	White	41172W	\$22.02	41170E	\$127.50
LUG-15	Warm Gray	41173X	\$22.02	—	—
LUG-20	Light Blue	41174Y	\$22.02	—	—
LUG-21	Medium Blue	41175A	\$22.02	—	—
LUG-22	Dark Blue	41176B	\$22.02	—	—
LUG-25	Turquoise	41177C	\$22.02	—	—
LUG-26	Aqua	41178D	\$22.02	—	—
LUG-30	Light Brown	41179E	\$22.02	—	—
LUG-31	Mahogany Brown	41180F	\$22.02	—	—
LUG-40	Chartreuse	41181G	\$22.02	—	—
LUG-41	Warm Green	41182H	\$22.02	—	—
LUG-42	Blue Green	41183J	\$22.02	—	—
LUG-43	Dark Green	41184K	\$22.02	—	—
LUG-50	Pink	41185L	\$22.02	—	—
LUG-51	Rose	41186M	\$22.02	—	—
LUG-52	Peach	41187N	\$22.02	—	—
LUG-53	Sun Tan	41188P	\$22.02	—	—
LUG-54	Lilac	41189B	\$22.02	—	—
LUG-55	Purple	41190R	\$22.02	—	—
LUG-56	Maroon	41191S	\$22.02	—	—
LUG-58	Dark Red	41123J	\$22.02	—	—
LUG-60	Light Yellow	41192T	\$22.02	—	—
LUG-61	Bright Yellow	41193E	\$22.02	—	—
LUG-65	Orange	41194H	\$22.02	—	—
High Fire Glazes Class Packs					
6 Color Class Pack		37394S	\$124.10	—	—
12 Color Class Pack		37392P	\$231.20	—	—

